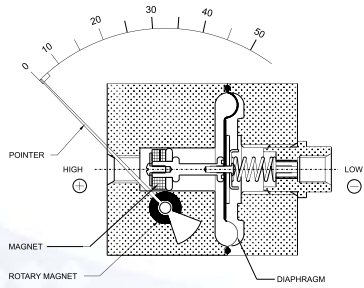


MEDIUM CONVOLUTED DIAPHRAGM



COMBINATIONS

Gauge



Switch

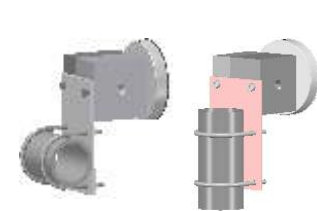


Gauge + switch (with a DIN plug)



MOUNTING BRACKETS

Gauge



Gauge + switch (with a DIN plug)



Gauge (Wall Mounting)



400 DGC

ΔP Range : 0 to 25 upto 600 mm H₂O
0 to 1 upto 25 inch H₂O

Specifications

Accuracy	± 2% of the FSD (Ascending)
Migration	No migration : Zero leakage from high to low port
Range	0-25 to 0-600 mm H ₂ O or similar ranges in other units
First marking on the scale	15% of the FSD
Sensing element	Diaphragm
Wetted parts	Diaphragm, body material, SS 302 spring & ceramic magnet
Case material	Stainless steel (SS 304)
Dial size in inch/mm	3.5", 4", 4.5", 6"/ 80, 100, 115, 150 mm
Mounting	Direct, front flange, 2" pipe & surface mounting
Maximum working pressure	35 bar / 500 psi.
Maximum process temperature	80° C / 175° F
Body material	Aluminum & SS 316
Seals	Buna-N, Viton, EPDM diaphragm & 'O' rings
Window	Float glass (Std.), toughened glass, acrylic & safety glass
Connection	1/4" NPT(F) Std. Optional 1/4" BSP(F) with adaptor
Porting	In-line, rear, bottom, bottom & vent, in-line & vent, in-line & bottom.
Over range protection	Up to the max. working pressure from high side
Protection for gauge & switch	IP 65 / NEMA-4

Options

- Liquid filling
- Red follower pointer (except 6")
- Customer logo
- Dual scale
- Colour band

Switches (Adjustable in 40-100% of FSD)

- 1 or 2 SPSTs with a DIN plug
- 1 SPDT with a DIN plug

