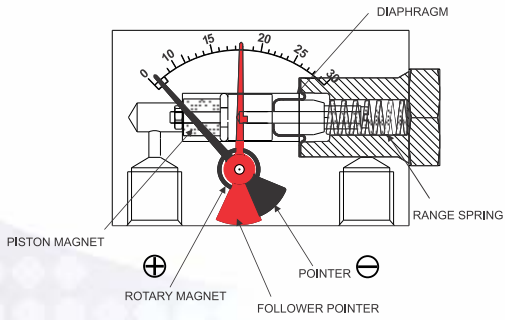


# DIAPHRAGM INSTRUMENT



## COMBINATIONS

### Gauge



### Gauge+switch



## GX 100

DP Range : 0 to 0.75 upto 2 bar  
0 to 10 upto 30 psi

### Specifications

Accuracy	±5% of FSD (Ascending)
Migration	No migration ; Zero leakage from high to low port
Range	0-0.75 upto 2 bar/psi dual scale
First marking on the scale	15% of the FSD
Sensing element	Diaphragm
Wetted parts	Body material, SS 302 spring, diaphragm & ceramic magnet
Case material	Stainless steel (SS 304)
Dial size in inch / mm	2.5", 3.5", 4" / 63, 80, 100 mm
Mounting	Direct
Maximum working pressure	100 bar.
Maximum process temperature	80°C / 175°F
Body material	Aluminium
Seals	Buna-N, Viton diaphragm & "O" rings
Window	Acrylic
Connection	1/4" NPT(F) Std. Optional 1/4" BSP(F)
Porting	Bottom (54mm or 55mm C. D.), in-line
Protection for gauge & switch	IP 65
Over range protection	Up to the max. working pressure from high side only. Never pressurize only LP side beyond 25 bar.

*This instrument with 2.5" dial can be directly mounted on ferrous surface.*

### Options:

- Customer logo
- Color band
- Red follower pointer ( Standard execution for 2.5" dial)

### Switches

- 1 or 2 SPDT switches (Factory set)

