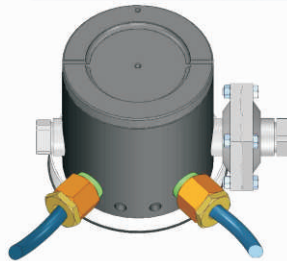
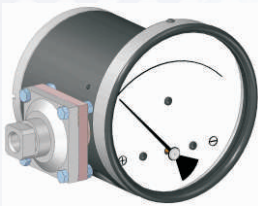
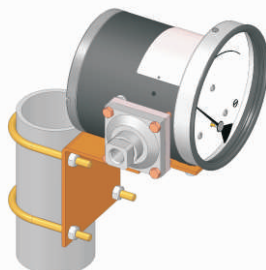
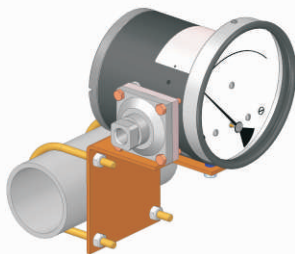


COMBINATIONS
Gauge+switch
 (with a terminal strip inside)



COMMON MOUNTING BRACKET



PR 20

**DP Range : 0 to 0.075 upto 4 bar
 0 to 1 upto 60 psi**

Specifications

Accuracy	±2% of the FSD (Ascending)
Migration	No migration : Zero leakage from high to low port
Range	0-0.075 to 0-4 bar or equivalent range in other units
First marking on the scale	20% of the FSD
Sensing element	Diaphragm
Wetted parts	Body material, SS 302 spring, ceramic magnet & seals
Case material	Stainless steel (SS 304)
Dial size in inch /mm	4.5", 6" / 115, 150 mm
Mounting	Direct or 2" horizontal / vertical pipe mounting bracket
Maximum working pressure	100 bar / 1500 psi
Maximum process temperature	80° C / 175° F
Body material	SS316 attached to flameproof aluminium enclosure
Diaphragm / Seals	Buna-N, Viton & EPDM 'O' rings
Window	Float glass(Std.), toughened glass, & safety glass.
Connection	1/4" NPT(F) Std. Optional 1/4" BSP(F)
Porting	In-line only
Over range protection	Up to the max. working pressure from high & low side
Protection for gauge & switch	IP 66 / NEMA-4X
Electrical connection	1/2" NPT(F) for 2 conduit ports at bottom, left and right 40° from center line.

Options

Switches (Adjustable in 40-100% of FSD)

Customer logo	1 or 2 SPSTs with a terminal strip
Dual scale	1 or 2 SPDTs with terminal strip
Colour band	
Filter mesh in (+) connection	

